

Simon Family Product Catalog

August 2000



TABLE OF CONTENTS
Simon Security System

Simon System Configuration	3
Sirens and Speakers	6
SAW Sensors	8
Crystal Intrusion Sensors	9
Fire and Smoke Sensors	12
Environmental Sensors	13
Crystal Emergency Panic Sensors	14
X-10 Lighting and Appliance Control	15
Central Station Monitoring	16
Sales, Print, and Video Materials	17
Ordering and Information	18



The Simon Security System: Affordable, Reliable, and Flexible.

ITI Technology

Learn Mode™ Technology.

ITI patented Learn Mode technology increases the ease and reliability of installations. Each sensor in a system has its own factory-programmed identity. ITI control panels “learn” the identity of each sensor in the system which eliminates programming errors in the field and other problems associated with the wireless systems of other manufacturers.

Installation Time

ITI Learn Mode systems are easy to install. Once the sensors are installed, they are added to the control panel memory; no sensor programming is required. Large residential systems can be installed in a single day by a relatively inexperienced installer. Smaller installations, such as apartments, can be completed in less than four hours.

Applications

ITI systems are used around the world to protect people and property. ITI systems are installed in museums for collection security, military installations for equipment security, utility companies for usage monitoring, nursing homes for resident monitoring, and universities for computer equipment security.

Home Automation

ITI systems go beyond burglar and fire protection. The home automation features available with some ITI systems allow the user to turn lights on and off at the touch of a button and control their heating and cooling system to save energy.

Two-Way Voice

ITI has responded to the growing concern over false alarm prevention and violent crime by developing its two-way voice technology. Two-way voice allows the central station operator to hear what is happening during an alarm and speak directly to the people on the premises.

Reporting and Off-site Programming Capabilities

ITI systems can report in SIA 2 and Contact ID formats and can report to most receivers. With many ITI systems, system programming changes can be made over the phone using ITI ToolBox™ upload/download software.

Ratings

The newest ITI products meet the following ratings:

- UL 985 (Household fire)
- UL 1023 (Household burglary)
- CSFM (California State Fire Marshall)
- ULC pending (UL of Canada)

Simon System Configuration

To configure a Simon Security System, start by selecting the control panel components listed on pages 1 through 3.

Control Panel



60-776-95R
Simon Control Panel*
60-776-01-95R
Simon Control Panel with Integrated Two-Way Voice*

* Transformer included.

Description/Features

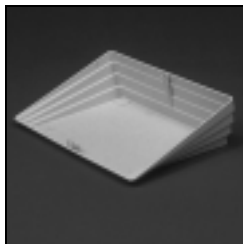
- Provides security and home automation system control
- 24 zones
- 2 optional hardwire inputs
- Voice messages
- Optional two-way voice
- 6 user-access codes
- Controls lights on a time schedule or individually.
- Controls lights or appliances on a time schedule or when a particular sensor is activated
- Controls a garage door opener with the optional keychain touchpad
- Supports door/window chime
- Latchkey feature notifies you if children have not arrived home at the scheduled time
- Remote phone control
- Event buffer aids in troubleshooting
- 60-776-01-95R:**
- Integrated two-way voice

Specifications

- 9 VAC Line Carrier Transformer
- Optional 9 VDC lithium backup battery
- 6.5-13 VDC @ 250 mA auxiliary power output
- Battery test under load every 4 hours
- SAW radio receiver
- 319.5 MHz radio frequency
- DTMF or pulse dialing
- Belgian gray
- 32-110°F operating temperature
- Wall or table top mounting
- 9.5" wide x 7.5" high x 1.5" deep

Accessories

- 60-787** Two-Way Voice Speaker and Microphone AVM (Audio Voice Module)
- 60-713** 9 VDC Lithium Battery
- 60-785** 24 Hour Rechargeable Battery
- 60-795** 18-Hour Rechargeable Battery
- 13-081** RJ31X Telco Jack
- 466-1598** Simon Specification Sheet 50/pk
- 49-440** Simon Phone Cord (8 to 8 pin)



60-720
Simon Table Mounting Base

- Provides tabletop mounting base for control panel
- Includes RJ11 cord

- Belgian gray
- 8.75" wide x 2.5" high x 6.60" deep

- 49-159** Simon Phone Cord (6 to 6 pin)

Power

Description/Features

Specifications

Accessories



60-712
9 VAC Line Carrier Transformer—
UL listed

- | | |
|-------------------------------------------------------------------------------------------------|------------------------------------------------------------------------------------------------------------------------------------------------------------------------------------------------------------------------------------------|
| <ul style="list-style-type: none"> ■ Provides primary power to the control panel | <ul style="list-style-type: none"> ■ 9 VAC power supply ■ 120 VAC @ 60 Hz power requirement ■ Belgian Gray ■ 32 to 110 °F operating temperature ■ 2.25" wide x 3.5" high x 1.75" deep |
|-------------------------------------------------------------------------------------------------|------------------------------------------------------------------------------------------------------------------------------------------------------------------------------------------------------------------------------------------|



60-713
9 VDC Lithium Battery 1/pk

- | | |
|---------------------------------------------------------------------------------------------------------------------------------------------------------------------------------------------------------------------------------------------------|----------------------------------------------------------------------------------------------------------------------------------------------------------------------------------------------------------------------------------------------------------------------------------------------------------------------------------------------------------|
| <ul style="list-style-type: none"> ■ Provides backup power to the control panel and hardwired devices when fully charged and AC power is out ■ Backup battery provides up to 24 hours backup power ■ UL approved | <ul style="list-style-type: none"> ■ 9 VDC backup power ■ 1-year battery life* <p>* Battery life based on control panel being tested under load every 4 hours and on short random AC power outages. If control panel loses AC power for an extended period of time the battery may need to be replaced sooner than one year.</p> |
|---------------------------------------------------------------------------------------------------------------------------------------------------------------------------------------------------------------------------------------------------|----------------------------------------------------------------------------------------------------------------------------------------------------------------------------------------------------------------------------------------------------------------------------------------------------------------------------------------------------------|

60-795
7.2 VDC 18-hour Nmh Battery 1/pk
60-785
7.2 VDC 24-hour Nmh Battery 1/pk

- | | |
|-----------------------------------------------------------------------------------------------------------------------------------------------------------------------------------------------------------------------------------------------------------------------------------------------------------------------------------------------------------|-----------------------------------------------------------------------------------------------------------------------------------------------------------------------------------------------------------------------------------------------------------------------------------------------------------------------------------------------------------------|
| <ul style="list-style-type: none"> ■ Provides backup power to the control panel and hardwired devices when fully charged and AC power is out ■ Backup battery provides up to 18 hours backup power ■ UL approved <p>60-785:</p> <ul style="list-style-type: none"> ■ provides up to 24 hours backup power | <ul style="list-style-type: none"> ■ 7.2 VDC backup power ■ 3 to 5-year battery life* <p>* Battery life based on control panel being tested under load every 4 hours and on short random AC power outages. If control panel loses AC power for an extended period of time the battery may need to be replaced sooner than one year.</p> |
|-----------------------------------------------------------------------------------------------------------------------------------------------------------------------------------------------------------------------------------------------------------------------------------------------------------------------------------------------------------|-----------------------------------------------------------------------------------------------------------------------------------------------------------------------------------------------------------------------------------------------------------------------------------------------------------------------------------------------------------------|

Wireless Touchpads

Description/Features

Specifications

Accessories



60-788-95R
Simon 2-Way TouchTalk Touchpad

- Wireless, 2-way talking touchpad
- Provides convenient operational control of the system
- Includes emergency panic button
- Light control capability
- Automatic low battery report
- Wall mounted
- No supervision, no tamper protection
- Provides voice feedback for system status and operation
- 3 AAA batteries
- 3 year battery life
- 10-120 °F operating temperature
- Belgian gray
- 3.5" wide x 5.23" high x 1" deep

60-710 1.5 VDC AAA Alkaline Battery 6/pk



60-671-95R
SAW HiTech Hand Held Touchpad

- Provides convenient operational control of the system
- Includes emergency panic button
- Light control capability
- Status report control
- Optional supervision reporting
- 2 1.5 VDC AAA alkaline batteries
- 1 year battery life
- Supervisory report every 64 minutes
- 10-120 °F operating temperature
- Belgian gray
- 2.25" wide x 5" high x 1" deep

60-710 1.5 VDC AAA Alkaline Battery 6/pk
60-790 HiTech Wallmount Bracket



60-659-95R
4-Button SAW Keychain Touchpad (pictured)

60-694-95R
5-Button SAW Keychain Touchpad

60-707-95R
2-Button SAW Keychain Touchpad

- Recessed buttons help prevent false alarms
- LED confirms RF transmissions
- 60-694-95R and 60-659-95R:
- Single button panic control
- Provides convenient operational control of the system
- Light control capability
- 12 VDC, 33 mAh alkaline battery included
- 5-8 year battery life
- 10 to 120 °F operating temperature
- Black
- Keychain mounting (keychain ring included)
- 1.4" wide x 2.25" high x 0.38" deep

60-711 12V 33 mAh Alkaline Battery
466-1050 4-Button Keychain Touchpad Specification Sheet 50/pk
466-1072 2-Button Crystal Keychain Touchpad Specification Sheet 50/pk



60-606-319.5
4-Button Crystal Keychain Touchpad (pictured)

60-607-319.5
2-Button Crystal Keychain Touchpad

- Provides convenient operational control of the system
- Recessed buttons help prevent false alarms
- Green LED confirms RF transmissions
- Light control capability (60-606-319.5 only)
- 12 VDC, 33 mAh alkaline battery included
- 5-8 year battery life
- 10 to 120 °F operating temperature
- Black
- Keychain mounting (keychain ring included)
- 1.4" wide x 2.25" high x 0.38" deep

60-711 12V 33 mAh Alkaline Battery
466-1050 4-Button Keychain Touchpad Specification Sheet 50/pk
466-1072 2-Button Crystal Keychain Touchpad Specification Sheet 50/pk

SIRENS AND SPEAKERS
Simon Security System

Speakers, Sirens,
Two-Way Voice Support

Description/Features

Specifications

Accessories



13-398
X-10 Siren

- Provides additional alarm without wiring
- Plugs into 120 VAC wall outlet
- Receives signals from control panel over AC lines.
- 110 dB siren output



60-736-95
Supervised Wireless Interior Siren
(SWIS)

- Produces low volume status beeps and full volume alarm sounds without any wiring
- Plugs into any 120 VAC wall outlet
- Receives signals from the control panel over AC power lines
- 3 status sound settings
- Low-battery warning
- Status sounds can be turned off
- Rechargeable backup battery included
- 85 dB siren output at 10 feet
- 120V AC powered
- 3.6 VDC NiCd battery pack included
- Belgian gray
- 4.3" wide x 3.4" high x 1.5" deep

- 34-047 SWIS Backup Battery
- 466-1577 SWIS Specification Sheet
- 50/pk



13-046
Hardwire Exterior Piezo Siren

- Produces full volume alarm sounds for large indoor and outdoor areas
- Weatherproof housing
- 115 dB alarm siren output
- Only 145 mA max current draw
- 115 dB max siren output
- 12 VDC @ 145 mA max current draw
- 6-12 VDC @ 98 mA operating voltage
- 22-gauge stranded wire
- 10 to 120 °F operating temperature
- White
- Wall mounting
- 3.56" diameter x 3.25" deep

**Speakers, Sirens,
Two-Way Voice Support**

Description/Features

Specifications

Accessories



13-374
LD 105 Hardwire Piezo Siren

- | | |
|----------------------------------------------------------------------------------------------------------------------------------------------------------------------|---------------------------------------------------------------------------------------------------------------------------------------------------------------------------------------------------------------------------------------------------------------------------------------------------------------------|
| <ul style="list-style-type: none"> ■ Produces low volume status beeps and full volume alarm sounds ■ Small size with maximum output of 85 dB | <ul style="list-style-type: none"> ■ 85 dB max siren output ■ 12 VDC @ 150 mA max current draw ■ 4.5- 15 VDC @ 75 mA operating voltage ■ 42 to 95 °F operating temperature ■ Belgian gray ■ Wall mounting ■ 2.8" wide x 4.8" high x 1.25" deep |
|----------------------------------------------------------------------------------------------------------------------------------------------------------------------|---------------------------------------------------------------------------------------------------------------------------------------------------------------------------------------------------------------------------------------------------------------------------------------------------------------------|



60-683
Phone Jack Siren (Flush Mount)

- | | |
|---------------------------------------------------------------------------------------------------------------------------------------------------------------------------------------------------------------------------------------------------------------------------------------------------------------------------------------------------------------------------------------------|---------------------------------------------------------------------------------------------------------------------------------------------------------------------------------------------------------------------------------------------------------------------------------------------------------------------------------------------------------------|
| <ul style="list-style-type: none"> ■ Produces low volume status beeps and full volume alarm sounds without running any wires ■ Uses existing phone line wiring ■ Replaces an existing phone jack and provides a jack for a phone ■ Can be used with any wireless or hardwire system supplying 6-12 VDC ■ Status sounds can be turned off | <ul style="list-style-type: none"> ■ 85 dB max siren output ■ 30 mA max current draw ■ 6-12 VDC @ 60 mA operating voltage ■ 10 to 120 °F operating temperature ■ Belgian gray ■ Wall mounting with back box or flush mounting with a single gang box ■ 2.88" wide x 6" high x 1.83" deep |
|---------------------------------------------------------------------------------------------------------------------------------------------------------------------------------------------------------------------------------------------------------------------------------------------------------------------------------------------------------------------------------------------|---------------------------------------------------------------------------------------------------------------------------------------------------------------------------------------------------------------------------------------------------------------------------------------------------------------------------------------------------------------|



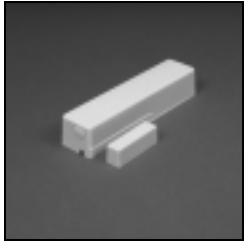
60-787
Two-Way Voice Speaker and
Microphone AVM (Audio Voice
Module)

- | | |
|-------------------------------------------------------------------------------------------------------------------------------------------------------------------------------------------------------------------------------------------------------------------------------------------------------------------------------------------------------------------------------------------------------------------------------------------------------------------------------------------------------------------|------------------------------------------------------------------------------------------------------------------------------------------------------------------------------------------------------------------------------------------------------------------------------------------------------------------------------------------------------------------------------|
| <ul style="list-style-type: none"> ■ Plug-in compatibility with Simon 2.0 only ■ Works with both standard (60-776-95R) and integrated voice (60-776-01-95R) Simon 2.0 control panels ■ Simon 2.0 control panels only support one AVM module ■ Gives the central station operator the ability to hear what is happening during an alarm and speak directly to the people on the premises ■ Auto Gain Control circuitry means microphone requires no adjustments | <ul style="list-style-type: none"> ■ 12 VDC @ 10 mA max current draw ■ 18-gauge stranded wire between speaker and control panel ■ 22-gauge stranded wire for all other wire runs ■ 40 to 100 °F operating temperature ■ Belgian gray ■ Recessed or surface mounting ■ 6.9" wide x 4.9" high x 2.5" deep |
|-------------------------------------------------------------------------------------------------------------------------------------------------------------------------------------------------------------------------------------------------------------------------------------------------------------------------------------------------------------------------------------------------------------------------------------------------------------------------------------------------------------------|------------------------------------------------------------------------------------------------------------------------------------------------------------------------------------------------------------------------------------------------------------------------------------------------------------------------------------------------------------------------------|

49-453 Cable Only

SAW SENSORS
Simon Security System

SAW Intrusion Sensors



60-670-95R
Belgian Gray Door/Window Sensor
60-670-11-95R
Brown Door/Window Sensor

Description/Features

- Protects anything that opens and closes, such as doors, windows, jewelry cases, and gun cabinets
- For low and average traffic areas
- Terminal block for hardwire contacts can be added to the built-in terminal post

Specifications

- Two 1.5 VDC AAA alkaline batteries
- 4-6 year battery life
- 1 internal reed switch
- 1 built-in terminal post
- 10 to 120 °F operating temperature
- Supervisory report every 64 minutes
- Belgian gray
- Flat surface mounting
- 1.13" wide x 4.25" high x .88" deep

Accessories

- 60-710 1.5 VDC AAA Alkaline Battery 6/pk
- 60-714 SAW Door/Window Sensor Terminal Block 10/pk
- 60-715 Belgian Gray Door/Window Sensor Spacer 20/pk
- 60-715-11 Brown Door/Window Sensor Spacer 20/pk
- 60-716 Belgian Gray Door/Window Sensor Magnet Spacer 25/pk
- 60-716-11 Brown Door/Window Sensor Magnet Spacer 25/pk
- 60-799 Sensor Case, White 5/pk
- 60-799-11 Sensor Case, Brown 5/pk
- 60-831-10 Magnet & Case, White 10/pk
- 60-831-11 Magnet & Case, Brown 10/pk



60-639-95R
Indoor PIR Motion Sensor
60-807-95R
Indoor PIR Pet Immune Motion Sensor

- Passive infrared detection
 - Detects movement inside an enclosed structure
 - Use in large rooms, narrow corridors, and stairwells
 - 3-minute motion lockout to conserve battery life
 - Two sensitivity settings
 - Small and unobtrusive
- 60-639-95R:
- Provides the best overall human detection
 - Optional Animal Alley Lens
 - Mounting kit included to adjust coverage pattern
- 60-807-95R:
- Pet Immunity up to 40 pounds
 - Excellent vertical vs. horizontal pattern recognition

- Two 1.5 VDC AA alkaline batteries
 - 3-4 year battery life
 - 32 to 120 °F operating temperature
 - Tamper switch
 - Supervisory report every 64 minutes
 - Belgian gray
 - Wall mounting
 - 2.5" wide x 3" high x 2" deep
- 60-807-95R:
- Use with pets up to 40 pounds

- 60-600 1.5 VDC AA alkaline battery
- 60-737 Swivel mount
- 60-709 Fresnel Animal Alley Lens 3/pk (only compatible with 60-639-95R)



60-639-95R-OD
Outdoor PIR Motion Sensor

- Use for chime notification of movement outside the premises or to turn on an exterior light upon approach*
- Use in driveways, walkways, etc.
- Passive infrared detection
- 3-minute motion lockout to conserve battery life

* This sensor is not intended for intrusion detection. Do not use this sensor in a police, panic, or fire sensor group.

- Two 1.5 VDC AA alkaline batteries
- 3-4 year battery life
- 10 to 120 °F operating temperature
- Tamper switch
- Supervisory report every 64 minutes
- Belgian gray
- Wall mounting
- 3" wide x 3" high x 3" deep (+1.25" with mounting bracket)

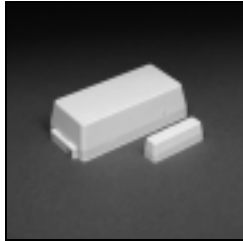
- 60-600 1.5 VDC AA Alkaline Battery

Crystal Intrusion Sensors

Description/Features

Specifications

Accessories

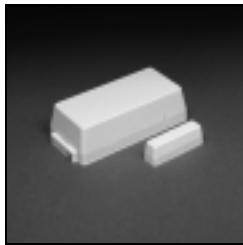


60-362-10-319.5
Belgian Gray Door/Window Sensor
60-362-11-319.5
Brown Door/Window Sensor

- Protects anything that opens and closes, such as doors, windows, jewelry cases, and gun cabinets
- For low and average traffic areas
- Built-in terminal strip for connecting hardwire contacts
- 2 internal reed switches allow for vertical or horizontal mounting

- 3.5 VDC ½ AA lithium battery
- 5-8 year battery life
- 2 internal reed switches
- 1.56" wide x 3.25" high x .88" deep
- 10 to 120 °F operating temperature
- Tamper switch
- Supervisory report every 64 minutes
- Belgian gray or brown
- Flat surface mounting

- 60-813 3.5 VDC ½ AA Lithium Battery 25/pk
- 60-189 Belgian Gray Sensor Spacers 20/pk
- 60-191 Brown Sensor Spacers 20/pk
- 60-188 Belgian Gray Magnet Spacers 25/pk
- 60-190 Brown Magnet Spacers 25/pk
- 60-260 Sensor Case, Belgian Gray 5/pk
- 60-261 Sensor Case, Brown 5/pk
- 60-555-10, 11 Magnets (includes plastic) 10/pk
- 466-1045 Door/Window Sensor Specification Sheet 50/pk

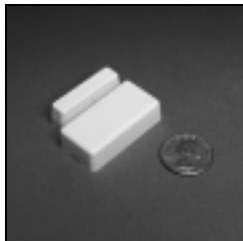


60-641-95
Belgian Gray Long-Life Door/Window Sensor
60-641-11-95
Brown Long-Life Door/Window Sensor

- Protects anything that opens and closes, such as doors, windows, jewelry cases, and gun cabinets
- For low and average traffic areas
- Built-in terminal strip for connecting hardwire contacts
- 2 internal reed switches allow for vertical or horizontal mounting

- 3.5 VDC AA lithium battery (permanent)
- 20-year battery life
- 2 internal reed switches
- 1.56" wide x 3.25" high x .88" deep
- 10 to 120 °F operating temperature
- Tamper switch
- Supervisory report every 64 minutes
- Belgian gray or brown
- Flat surface mounting

- 60-189 Belgian Gray Sensor Spacers 20/pk
- 60-191 Brown Sensor Spacers 20/pk
- 60-188 Belgian Gray Magnet Spacers 25/pk
- 60-190 Brown Magnet Spacers 25/pk
- 60-260 Belgian Gray Sensor Case 5/pk
- 60-261 Brown Sensor Cases 5/pk
- 60-555-10 Belgian Gray Magnets (includes plastic) 10/pk
- 60-555-11 Brown Magnets (includes plastic) 10/pk
- 466-1048 Long Life Sensor Specification Sheet 50/pk



60-688-95
Belgian Gray Micro Door/Window Sensor
60-688-11-95
Brown Micro Door/Window Sensor

- Installs on anything that opens or closes
- Small size and low profile
- Provides sharp and clean installations
- User replaceable battery

* This sensor does not have a built-in terminal switch.

- 3 VDC Coin Cell Lithium Battery (CR 2032)
- 5-8 year battery life*
- 10 -120 °F operating temperature
- Tamper switch
- Supervisory report every 64 minutes
- Belgian gray or brown
- Flat surface mounting
- .8" wide x 1.75" high x .5" deep

* Actual battery life depends on how often the sensor is activated.

- 60-699 3 VDC 190 mAh Coin Lithium Battery 10/pk
- 60-729 Belgian Gray Magnet (includes plastic) 10/pk
- 60-729-11 Brown Magnet (includes plastic) 10/pk
- 466-1211 Micro Door/Window Sensor Specification Sheet 50/pk
- 60-717 Belgian Gray DWS Adapter (Screw Mount) 25/pk
- 60-717-11 Brown DWS Adapter (Screw Mount) 25/pk
- 60-745 Belgian Gray Sensor Case 5/pk
- 60-745-11 Brown Sensor Case 5/pk



60-741-95
Micro Recessed Belgian Gray Door/Window Sensor
60-741-11-95
Micro Recessed Brown D/W Sensor

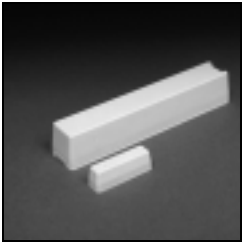
- Protects doors and windows where the sensor should be concealed
- Sensors are completely concealed when installed
- Fixed lithium battery (soldered)

- 3.5 VDC ½ AA lithium battery
- 12-16 year battery life
- Recessed mount in 5/8" hole
- Magnet can be mounted using 5/8" sleeve, or 1/2" hole
- Supervisory report every 64 minutes
- 10 to 120 °F operating temperature

- 466-1501 Micro Recessed Door/Window Sensor Specification Sheet 50/pk

CRYSTAL INTRUSION SENSORS
Simon Security System

Crystal Intrusion
Sensors –Continued



60-499-10-319.5
Slim Line Belgian Gray
Door/Window Sensor
60-499-11-319.5
Slim Line Brown D/W Sensor

Description/Features

- Protects anything that opens and closes where the sensor mounting area is limited, such as narrow casements and window frames
- Slim design fits on most windows.

Specifications

- 3.5 VDC ½ AA lithium battery (send to ITI to replace)
- 5-8 year battery life
- 10 to 120 °F operating temperature
- Tamper switch
- Supervisory report every 64 minutes
- Belgian gray or brown
- Flat surface mounting
- .31" wide x 4.94" high x .88" deep

Accessories

- 80-089-10 Belgian Gray Sensor Case 5/pk
- 80-089-11 Brown Sensor Case 5/pk



60-511-01-95
DS924i PIR Motion Sensor
60-511-02-95
DS924i Pet Immune PIR Motion
Sensor

- Detects movement inside an enclosed structure
- Use in large rooms, narrow corridors, and stairwells
- Passive infrared detection
- 3 sensitivity settings
- Includes masking kit to adjust coverage pattern
- 3-minute motion lockout to conserve battery life

60-511-01-95:

- Optional lenses to suit various installation needs

60-511-02-95:

- Adds pet immunity up to 40 pounds

- 3.5 VDC ½ AA lithium battery
- 3-5 year battery life
- Standard 70° lens coverage is 35' x 40'
- 10 to 120 °F operating temperature
- Tamper switch
- Supervisory report every 64 minutes
- Belgian gray
- Wall mounting
- 2.75" wide x 4.38" high x 1.75" deep

- 60-813 3.5 VDC ½ AA Lithium Battery 25/pk
- 13-286 DS924 70' Long Range Lens 3/pk
- 13-287 DS924 78° x 35' Pet Lens 3/pk
- 13-288 DS924 110° x 35' Wide Angle Lens 3/pk
- 13-318 DS924 35' Barrier Lens 3/pk
- 13-319 DS924 85° x 70' Dual Corridor Lens 3/pk
- 13-320 DS924 10° x 70' Long Range Pet Lens 3/pk
- 13-359 DS924 Mounting Bracket
- 466-1145 DS924i PIR Specification Sheet 50/pk



60-703-95
ITI Crystal PIR Motion Sensor

- Detects movement inside an enclosed structure
- Use in large rooms, narrow corridors, and stairwells
- Passive infrared detection
- 3-minute motion lockout to conserve battery life
- Optional pet lens
- Two sensitivity settings
- Mounting kit included to adjust coverage pattern
- Small and unobtrusive

- Two 1.9 VDC AA lithium batteries
- 3-4 year battery life
- 10 to 120 °F operating temperature
- Tamper switch
- Supervisory report every 64 minutes
- Belgian gray
- Wall mounting
- 2.5" wide x 3" high x 2" deep

- 60-619 1.9 VDC AA Lithium Batteries 6/pk
- 60-709 Fresnel Animal Alley Lens 3/pk



60-459-319.5
Sound Sensor

- Responds to frequencies generated by breaking glass
- Installs in rooms with many windows or a large picture window
- Detection coverage of 360° up to 15' away
- Detects sound of breaking glass (including tempered glass) .06" - .25" thick
- Sensitivity preset by manufacturer

- 3.5 VDC ½ AA lithium battery
- 5-8 year battery life
- Audio microphone
- 10 to 120 °F operating temperature
- Supervisory report every 64 minutes
- Belgian gray
- Wall or ceiling mounting
- 4.38" diameter x 2" deep

- 60-813 3.5 VDC ½ AA Lithium Battery 25/pk
- 13-332 Sound Sensor Tester

Crystal Intrusion Sensors—Continued



60-834-95
FlexGuard® Dual Disturbance Sound Sensor

Description/Features

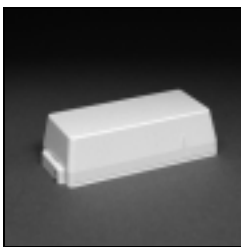
- Responds to frequencies generated by breaking glass
- Installs in rooms with many windows or a large picture window
- Detection coverage up to 25' away in any direction
- Includes a flex and audio microphone
- Adjustable flex sensitivity
- Test LEDs for flex sensitivity and audio range settings
- Uses two 3.5 VDC AA batteries or one 9 VDC battery
- Replaces the Intellisense Sound Sensor (part number 60-582-10-319.5)

Specifications

- Two 3.5 VDC AA lithium batteries (included) or one 9 VDC alkaline or lithium battery
- 5-8 year battery life
- 10 to 120 °F operating temperature
- Tamper switch
- Supervisory report every 64 minutes
- Belgian gray
- Wall or ceiling mounting
- 4.13" wide x 4.75" high x 1.25" deep

Accessories

- 60-619 3.5 VDC AA Lithium Battery 6/pk
- 13-332 Sound Sensor Tester

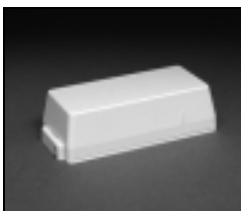


60-461-10-319.5
Belgian Gray Shock Sensor
60-461-11-319.5
Brown Shock Sensor

- Installs on windows to detect openings/closings and breaking glass or splintering wood
- Detects breaking glass or splintering wood up to 5' away
- Shock detector can be mounted inside or outside sensor case
- 2 built-in reed switches allow for vertical or horizontal mounting to detect window openings/closings
- Adjustable sensitivity

- 3.5 VDC ½ AA lithium battery
- 5-8 year battery life
- 10 to 120 °F operating temperature
- Tamper switch
- Supervisory report every 64 minutes
- Belgian gray or brown
- Window frame mounting
- 1.56" wide x 4.88" high x .94" deep

- 60-813 3.5 VDC ½ AA Lithium Battery 25/pk
- 80-006-10, 11 Belgian Gray, Brown Sensor Spacer 20/pk
- 13-005, 011 Belgian Gray, Brown Surface Mount Litton® Shock Detector SP3237
- 60-267 Belgian Gray Sensor Case 5/pk
- 60-268 Brown Sensor Case 5/pk
- 13-214 Litton Shock Detector (fits inside case)
- 13-215 Belgian Gray Litton Recessed Mount Shock Detector



60-462-10-319.5
Belgian Gray Glass Break Sensor
60-462-11-319.5
Brown Glass Break Sensor

- Mounts directly onto glass in doors and windows, gun cabinets, etc., to detect breaking glass
- 5' sensitivity radius
- Adheres to glass being protected
- Can be mounted anywhere on glass, at least 1" from glass frame
- Built-in terminal strip for connecting hardwire contacts

- 3.5 VDC 1/2 AA lithium battery
- 5-8 year battery life
- 10 to 120 °F operating temperature
- Tamper switch
- Supervisory report every 64 minutes
- Belgian gray or brown
- Glass mounting with adhesive pads (included)
- 1.5" wide x 3.25" high x .88" deep

- 60-813 3.5 VDC ½ AA Lithium Battery 25/pk
- 13-067 Glass Guard Adhesive Pad 50/pk

FIRE AND SMOKE
Simon Security System

Fire and Smoke Sensors

Description/Features

Specifications

Accessories



60-645-95
System Sensor™ Smoke
Sensor 2300 RF

- Produces an alarm and sends an alarm signal to the control panel when smoke is detected
- Use in bedrooms, hallways, stairwells, etc.
- Most suitable for detecting slow smoldering fires
- Photoelectric smoke detector
- Built-in siren
- Built-in low battery annunciator
- 60-645-95:**
 - Low battery signal sent to control panel 7 days prior to low battery chirp
 - Notifies user when sensor needs to be cleaned
 - Installer-serviceable chamber cleaning

- 32 to 100 °F operating temperature
- Tamper switch
- Supervisory report every 64 minutes
- White
- Wall or ceiling mounting
- 5.5" diameter x 2.5" deep
- 60-645-95:**
 - Two 3V 2/3 A lithium batteries
 - 5 year battery life
- 60-506-319.5:**
 - Two 9 VDC alkaline or lithium batteries
 - 1 year alkaline battery life
 - 2 year lithium battery life

- 60-814 9 VDC Eveready Energizer Alkaline Battery - UL listed 3/pk
- 60-811 9 VDC, 550 mAh, Duracell Alkaline Battery - UL listed 3/pk
- 60-733 3 VDC 2/3 A Lithium Battery 6/pk
- 466-1301 2300 RF Smoke Specification Sheet 50/pk



60-506-319.5
System Sensor™ Smoke
Sensor 2100 RF

- Responds to high temperatures or rapid temperature changes
- Use in kitchens, bathrooms, garages, etc.
- Provides detection in spaces up to 2,500 sq. ft.
- Activates when temperature increases 15 °F/minute or greater
- Fixed temperature sensor activates at 135 °F

- One 9 VDC alkaline or lithium battery
- 1 year alkaline battery life
- 2 year lithium battery life
- 40 to 100 °F operating temperature
- Tamper switch
- Supervisory report every 64 minutes
- Belgian gray
- Wall or ceiling mounting
- 4.5" diameter x 2.25" deep

- 60-814 9 VDC Eveready Energizer Alkaline Battery - UL listed 3/pk
- 60-811 9 VDC, 550 mAh, Duracell Alkaline Battery - UL listed 3/pk
- 60-813 9 VDC, 1.2 Ah, UltraLife Lithium Battery - UL listed



60-460-319.5
Rate-of-Rise Heat Sensor
60-460-319.5-LB
Rate-of-Rise Heat Sensor w/Lithium
Battery

- Allows a person to activate a fire alarm in the event of a fire
- Use in residential or commercial sites
- Manually activated
- Built-in transmitter
- Clear shield protects activation switch
- Easily resets with key

- 3.5 VDC ½ AA lithium battery
- 5-8 year battery life
- Manually activated
- Reset with key (included)
- 40 to 100 °F operating temperature
- Supervisory report every 64 minutes
- Red case
- Wall mounting
- 3.38" wide x 3.38" high x 1.88" deep

- 60-813 3.5 VDC ½ AA Lithium Battery 25/pk



60-589-319.5
Fire Pull Station Sensor

SAW Environmental Sensors

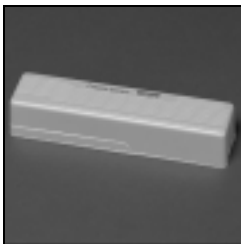


60-744-95R
Water Sensor

- Detects water leaks in home or business
- Uses two parts: a detector wired to the transmitter

- Two 1.5 VDC AAA alkaline batteries
- 3-5 year battery life
- 10 to 120 °F operating temperature
- Belgian gray
- Flat surface mounting
- Detector: 0.94" wide x 1.80" high x 0.50" deep
- 1.13" wide x 4.25" high x 0.94" deep

60-710 1.5 VDC AAA Alkaline Battery
6/pk



60-742-95R
Freeze Sensor

- Detects when temperature drops below 41 °F
- Use to detect furnace failure in home or business

- Two 1.5 VDC AAA alkaline batteries
- 3-5 year battery life
- 10 to 120 °F operating temperature
- Supervisory report every 64 minutes
- Belgian gray
- Flat surface mounting
- 1.13" wide x 4.25" high x 0.88" deep

60-710 1.5 VDC AAA Alkaline Battery
6/pk

Crystal Environmental Sensors



60-504-10-319.5
Freeze Sensor

- Detects furnace failure in residential or commercial sites by detecting when the air temperature falls below 45 °F
- Use in climates where temperatures can drop below 32 °F
- Monitors the temperature in an open area up to 900 sq. ft.
- Sends alarm signal to control panel when air temperature falls below 45 °F
- Sends restore signal to control panel when temperature increases to 55 to 60 °F

- 3.5 VDC ½ AA lithium battery
- 5-8 year battery life
- 10 to 120 °F operating temperature
- Tamper switch
- Supervisory report every 64 minutes
- Belgian gray
- Flat surface mounting
- 1.56" wide x 4.88" high x .94" deep

60-813 3.5 VDC ½ AA Lithium Battery
25/pk
80-006-10 Belgian Gray Sensor
Spacer 20/pk
80-006-11 Brown Sensor Spacer
20/pk



60-652-95
Carbon Monoxide Sensor

- Detects hazardous levels of carbon monoxide gas
- Internal siren sounds and red light comes on when dangerous levels of gas are present
- Transmits alarm signal to control panel when dangerous levels of gas are present
- Sensor adjusts response time to carbon monoxide levels present
- Green light indicates detector is functioning properly
- Plugs into standard outlet

Note:

Gases NOT detected: methane, butane, heptane, ethyl alcohol, isopropyl alcohol, carbon dioxide, and propane.

- 110 VAC @ 60 Hz, 7W power requirement
- 102-132 VAC operating voltage
- 2.5W average standby power
- 3.5 VDC ½ AA lithium battery for transmitter
- 5-8 year sensor battery life
- 85 dB @ 10' for 4 minutes minimum internal siren output
- Time and CO PPM present for alarm to sound:
 - <15 minutes @ 400 PPM
 - <35 minutes @ 200 PPM
 - <90 minutes @ 100 PPM
- 40 to 100 °F operating temperature
- Supervisory report every 64 minutes
- White case, green label
- 110 VAC grounded non-switched outlet mounting
- 6.5" wide x 3.5" high x 2.25" deep

PANIC SENSORS
Simon Security System

Crystal Emergency Panic Sensors

Description/Features

Specifications

Accessories



60-578-10-95
Water-Resistant Pendant Panic Sensor

- Designed to go just about anywhere, this sensor allows a person to activate a 24-hour emergency alarm
- Water resistant
- Recessed panic button prevents false alarms
- Can be worn around neck
- Built-in belt clip allows sensor to be attached to belt or purse
- Can be supervised
- Wall mounting option

- 3.5 VDC ½ AA lithium battery
- 5-8 year battery life
- Water and shock resistant
- 40°-100°F operating temperature
- Supervisory report every 64 minutes
- Belgian gray, gray button
- Necklace cord (included), belt clip (included), and wall mounting
- 1.75" wide x 2.25" high x .75" deep

- 60-813 3.5 VDC ½ AA Lithium Battery 25/pk
- 80-116 Wall Mount Bracket 5/pk



60-452-10-319.5
Pendant Panic Sensor

- Allows a person to wear the sensor and activate a 24-hour emergency alarm
- Recessed panic button prevents false alarms
- Can be worn around neck
- Can be supervised

- 3.5 VDC ½ AA lithium battery
- 5-8 year battery life
- 40°-100°F operating temperature
- Supervisory report every 64 minutes
- Belgian gray
- Necklace (cord included) and belt holster mounting
- 1.56" wide x 3.81" high x 1" deep

- 60-813 3.5 VDC ½ AA Lithium Battery 25/pk
- 13-161 Black Leather Belt Holster

60-457-10-319.5
Double Button Panic Sensor
60-458-10-319.5
Single Button Panic Sensor

- Allows a person to activate a 24-hour emergency alarm
- 60-457: Two buttons must be pressed together, reducing the likelihood of false alarms
- 60-458: Single button press for easy alarm activation
- Can be supervised
- Can be wall mounted

- 3.5 VDC ½ AA lithium battery
- 5-8 year battery life
- 40°-120°F operating temperature
- Supervisory report every 64 minutes
- Belgian gray
- Portable or wall mounting
- 2.56" wide x 4" high x .94" deep

- 60-813 3.5 VDC ½ AA Lithium Battery 25/pk

X-10 Lighting and Appliance Control



13-079
X-10 Appliance Module

- | | |
|----------------------------------------------------------------------------------------------------------------------------------------------------------------------------------------------------------------------------------------------------------------|------------------------------------------------------------------------------------------------------------------|
| <ul style="list-style-type: none"> ■ 15 Amps, 500W ■ Communicates through existing AC wiring; no additional wiring needed ■ Controls appliances such as fans, dehumidifiers, and stereos, using Simon scheduling capabilities | <ul style="list-style-type: none"> ■ 500W appliances ■ 120 VAC @ 60 Hz power requirement |
|----------------------------------------------------------------------------------------------------------------------------------------------------------------------------------------------------------------------------------------------------------------|------------------------------------------------------------------------------------------------------------------|



13-204
X-10 Powerhouse Series Lamp Module

- | | |
|------------------------------------------------------------------------------------------------------------------------------------------------------------------------------------------------------------------------------------------------------------------------------------------------------------------------------------------------------------------------------------------------------------------------------|------------------------------------------------------------------------------------------------------------------------------------------------------------------------------------------------------------------|
| <ul style="list-style-type: none"> ■ Provides system and user control of lamps (up to 300W) ■ Communicates through existing AC wiring; no additional wiring needed ■ Turns lights on during a fire or auxiliary alarm ■ Blinks lights during police alarm ■ Blinks lights to indicate arming level ■ Turns lights on for 5 minutes when system is armed/disarmed | <ul style="list-style-type: none"> ■ For use with 300W max incandescent lights only ■ 120 VAC @ 60 Hz power requirement ■ White ■ 2.25" wide x 2.75" high x 1.25" deep |
|------------------------------------------------------------------------------------------------------------------------------------------------------------------------------------------------------------------------------------------------------------------------------------------------------------------------------------------------------------------------------------------------------------------------------|------------------------------------------------------------------------------------------------------------------------------------------------------------------------------------------------------------------|

13-403:

- Automatic gain control—more reliable.



13-399
Universal Relay Module

- | | |
|------------------------------------------------------------------------------------------------------------------------------------------------------------------------------------------------------------------------------------------------------------------------------------------------|----------------------------------------------------------------------------------------------------------------------------------------------------------------------------------------------------------------------------------------------------------------------------------------------------------|
| <ul style="list-style-type: none"> ■ Activates a relay for devices such as garage door openers, sprinklers, and curtains with a 4-Button Keychain Touchpad ■ Built-in low volume siren ■ Open/close command can be set for momentary or continuous open/close | <ul style="list-style-type: none"> ■ 120 VAC @ 60 Hz power requirement ■ Provides isolated relay contacts to control devices rated up to 5A @ 24 VDC (100 VA @ 30 VAC) ■ Rated for devices up to 30 VDC ■ White ■ 2.25" wide x 3.5" high x 1.75" deep |
|------------------------------------------------------------------------------------------------------------------------------------------------------------------------------------------------------------------------------------------------------------------------------------------------|----------------------------------------------------------------------------------------------------------------------------------------------------------------------------------------------------------------------------------------------------------------------------------------------------------|



13-397
2-Way Wall Switch Module

- | | |
|------------------------------------------------------------------------------------------------------------------------------------------------|------------------------------------------------------------------------------------------------------------------|
| <ul style="list-style-type: none"> ■ Automates indoor or outdoor lights, including: porch, patio, hallway, and stairway lights. | <ul style="list-style-type: none"> ■ 500W appliances ■ 120 VAC @ 60 Hz power requirement |
|------------------------------------------------------------------------------------------------------------------------------------------------|------------------------------------------------------------------------------------------------------------------|

13-461
Screw-in Lamp Module

- | | |
|---------------------------------------------------------------------------------------------------------------------------------------------------------------------------------------------------------------------------------------------------------------------------------------|--------------------------------------------------------------------------------------------------------------------------------------------------------------------|
| <ul style="list-style-type: none"> ■ Screws into the light socket ■ Works with incandescent lights ■ Turns lights on during a fire or auxiliary alarm ■ Blinks lights during police alarm ■ Blinks lights to indicate arming level | <ul style="list-style-type: none"> ■ For use with 150W max incandescent lights only ■ 1.25" wide x 2.5" high with a 3/8" bump on one side. |
|---------------------------------------------------------------------------------------------------------------------------------------------------------------------------------------------------------------------------------------------------------------------------------------|--------------------------------------------------------------------------------------------------------------------------------------------------------------------|

X-10 MODULES AND CENTRAL STATION MONITORING
Simon Security System

Central Station Monitoring



60-766
CS-5000 Central Station Receiver

Description/Features

- Provides control panel monitoring
- Monitors all ITI systems
- Monitors most communications formats
- Provides ITI and SIA (Security Industry Association) standard format
- Communication outputs for computer automation applications
- Built-in CRT
- 4 telephone line connections
- 3 RS-232 outputs
- Backup batteries

Specifications

- 110 VAC @ 60 Hz or 220 VAC @ 50 Hz operating voltage
- 12 VDC, 6.5 Ah lead acid backup battery (not included)
- Chassis: Rack mountable, anodized aluminum desktop chassis; "tool-less" front panel access to all changeable cards; holds up to 12 line cards
- 19" wide, 5.75" high, 11.5" deep
- Continuous call throughput from 12 line cards simultaneously receiving SIA DCS events at 300 baud
- Automatic line card interpretations of Modem, FSK/BFSK, Tone Burst, and DTMF formats
- 500 call minimum call history memory.
- Built-in test and diagnostics
- Includes one line card

Accessories

- 13-352 Okidata® Printer
- 13-227 Proxima® Surge Suppressor
- 13-248 12V, 6.5 Ah Backup Battery
- 60-417 Phone Line and Card
- 46-056 Installation and Operator's Guide
- 46-081 CS-5000 Full Color Brochure

Remote Programming Software



60-675-WIN
ITI ToolBox for Windows

- Software application that allows control panels to be programmed from a PC
- Uploads control panel information for new accounts
- Downloads control panel information for new installations
- Updates existing control panel programming
- Easy, menu-driven interface
- On-line help
- Stores database of control panel accounts on a PC hard disk
- Y2K Compliant

- Package includes:
 - Up to two 3.5" high density disks
 - User's Guide
 - On-line help
- Minimum system required:
 - Windows 3.1 or later
 - 386/25 MHz IBM® or compatible PC
 - Hayes™ or compatible modem
 - 8 MB free hard disk space

60-719 ToolBox Modem Kit

Sales, Print, and Video
Materials

Description/Features

Specifications

Accessories

80-213-2
Simon Demonstration Kit

- Provides an effective way to demonstrate Express to business and residential customers.

Kit Includes:

- Control panel with integrated two-way voice
- (2) SAW door/window sensors
- (1) 4-button keychain touchpad
- (1) X-10 Pro siren
- (1) X-10 Pro lamp module
- ITI PIR motion detector housing (not operational)
- (1) 9 VAC Class II line carrier transformer



466-1397
Simon End-User Brochure

- Provides an overview of the Simon Security System.
- Four color
- Glossy
- 8.5" high x 11" wide
- 8 pages
- 50/pkg



466-1401
Simon End-User Feature/Benefit Sheet

- Four color
- Glossy
- 8.5" high x 11" wide
- 2 pages
- 50/pkg

SALES, PRINT, AND VIDEO MATERIALS
Simon Security System

Sales, Print, and Video
Materials—Continued

Description/Features

Specifications

Accessories



466-1504-SAW
SAW Wireless Sensor Brochure
466-1504-CRY
Crystal Wireless Sensor Brochure

- Provides an overview of some wireless SAW sensors available and their applications
- Four color
- Glossy
- 4" wide x 9" high (folded)
- 16 pages
- 25/pk



466-1540-01
Simon Installation Video
466-1492-01
Simon Owner's Video
466-1574
Simon Installation Instructions
466-1575
Simon Owner's Manual

- Installation and User's Guides:**
- Provides complete operating instructions for the security system.
 - 3-hole punched
 - 8.5" wide x 11" high
 - One included with each panel.
- Installation and User's Videos:**
- Provides an overview and basic instructions for operating. One video is included with each panel.
 - 15 minutes
 - Full color



466-1511
Simon Student Training Guide

- Provides installation, setup, and programming procedures.
- 3-hole punched
- 8.5" wide x 11" high
- Available upon request

Orders

Orders usually ship within one working day. Orders become effective only when accepted by ITI upon shipment or written confirmation.

To Order by Phone:

Call Customer Service at 1.800.777.4841
Monday-Friday, 7:00 am-6:00 pm CST

To Order by Fax:

Call 1.800.777.4842
Seven days a week, 24 hours a day.

Returns

Before returning product, call ITI Customer Service to obtain a Return Merchandise Authorization (RMA) number. The RMA number must be clearly marked on the outside of the shipping carton.

For repairs or credits, call Customer Service. If a product is defective when received, call ITI Technical Services for an advanced replacement authorization.

For Credits or Repairs:

Call Customer Service at 1.800.777.4841
Monday-Friday, 7:00 am-6:00 pm CST

For an Advanced Replacement or Technical Information:

Call Technical Services at 1.800.777.2624
Monday-Friday, 7:00 am-8:00 pm CST

Return Merchandise with an RMA Number* to:

ITI
2266 North 2nd Street
North St. Paul, MN 55109-2900

* Write the RMA number on the outside of the shipping carton.

Terms and Conditions

Terms

Payment options include MasterCard®/Visa®, prepay, or COD until credit is established. Terms are available by contacting ITI credit. Full description of terms provided on request and when an account is established with ITI.

Sales Tax

Applicable sales tax is charged unless a Certificate of Exemption is on file with ITI. GST is added to orders shipped to Canada.

Shipping

Shipments leave daily from our warehouses via UPS. Air shipment services are available upon request at the time of order. All shipments are F.O.B. ITI's warehouse.

Pick-Up

Arrangements can be made to pick up orders at the nearest regional warehouse. Please indicate your order as a Will Call when placing your order. Place order 24 hours before your planned pick-up time.

Claims

Title is passed to common carrier or authorized agent upon delivery of the order. All damage claims must be turned into the shipping company by the customer receiving the goods. Original shipping cartons must be saved, because claims are typically not processed without them. **Claims must be made within 5 days of receipt of merchandise.**

Warranty

ITI's current warranty policies are honored. See the ITI Limited Warranty for details.

Right to Purchase

You must be an authorized ITI dealer purchase product from ITI. Possession of this document does not constitute the right to purchase.

Minimum Order

New dealers may have an initial purchase requirement.

International Sales

All international sales are made through ITI International, Inc. F.O.B. St. Paul, MN, USA. All prices quoted are payable in United States dollars.

Disclaimer

All prices, terms, and specifications are subject to change without notice. Price in effect at time shipment will apply.

Trademarks

ITI, the ITI logo, ToolBox, Learn Mode, Simon, SuperBus, and Quik Bridge are trademarks of Interactive Technologies, Inc. All other marks are the property of their respective owners.

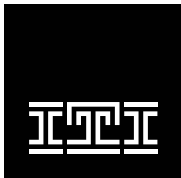
Contacting ITI

	Phone	Fax
Advanced Replacement RMAs	800.777.2624	N/A
Corporate Offices	800.777.5484	651.779-4890
Credit	800.777.5484	800.773.4633
Customer Service: Orders and Repair RMAs	800.777.4841	800.777.4842
Field and Inside Sales	800.777.1415	651.773.2404
Technical Services	800.777.2624	651.779.4888
Training	800.777.8166	800.777.4842
Web Site	www.itii.com	

INDEX
by Product Part Number

13-046 Hardwire Exterior Piezo Siren	6
13-079 X-10 Appliance Module	15
13-204 X-10 Powerhouse Series Lamp Module	15
13-397 2-Way Wall Switch Module	15
13-399 Universal Relay Module	15
13-403 X-10 Pro Series Lamp Module	15
13-461 Screw-in Lamp Module	15
466-1397 Simon End-User Brochure	17
466-1401 Simon End-User Feature/Benefit Sheet	17
466-1492-01 Simon Owner's Video	18
466-1504-CRY Crystal Wireless Sensor Brochure	18
466-1504-SAW SAW Wireless Sensor Brochure	18
466-1511 Simon Student Training Guide	18
466-1540-01 Simon Installation Video	18
466-1574 Simon Installation Instructions	18
466-1575 Simon Owner's Manual	18
60-362-10-319.5 Belgian Gray Door/Window Sensor	9
60-362-11-319.5 Brown Door/Window Sensor	9
60-452-10-319.5 Pendant Panic Sensor	14
60-457-10-319.5 Double Button Panic Sensor	14
60-458-10-319.5 Single Button Panic Sensor	14
60-459-319.5 Sound Sensor	10
60-460-319.5 Rate-of-Rise Heat Sensor	12
60-460-319.5-LB Rate-of-Rise Heat Sensor w/Lithium Battery	12
60-461-10-319.5 Belgian Gray Shock Sensor	11
60-461-11-319.5 Brown Shock Sensor	11
60-462-10-319.5 Belgian Gray Glass Break Sensor	11
60-462-11-319.5 Brown Glass Break Sensor	11
60-499-10-319.5 Slim Line Belgian Gray Door/Window Sensor	10
60-499-11-319.5 Slim Line Brown D/W Sensor	10
60-504-10-319.5 Freeze Sensor	13
60-506-319.5 System Sensor Smoke Sensor 2100 RF	12
60-511-01-95 DS924i PIR Motion Sensor	10
60-511-02-95 DS924i Pet Immune PIR Motion Sensor	10
60-589-319.5 Fire Pull Station Sensor	12
60-606-319.5 4-Button Crystal Keychain Touchpad	5
60-607-319.5 2-Button Crystal Keychain Touchpad	5
60-615-10-319.5 Quik Bridge Learn Mode Repeater	11
60-639-95R Indoor PIR Motion Sensor	8
60-639-95R-OD Outdoor PIR Motion Sensor	8
60-641-11-95 Brown Long-Life Door/Window Sensor	9
60-641-95 Belgian Gray Long-Life Door/Window Sensor	9
60-645-95 System Sensor Smoke Sensor 2300 RF	12
60-652-95 Carbon Monoxide Sensor	13
60-659-95R 4-Button SAW Keychain Touchpad	5
60-670-11-95R Brown Door/Window Sensor	8
60-670-95R Belgian Gray Door/Window Sensor	8
60-671-95R SAW HiTech Hand Held Touchpad	5
60-675-WIN ITI ToolBox for Windows	16
60-688-11-95 Brown Micro Door/Window Sensor	9
60-688-95 Belgian Gray Micro Door/Window Sensor	9
60-694-95R 5-Button SAW Keychain Touchpad	5
60-703-95 ITI Crystal PIR Motion Sensor	10
60-707-95R 2-Button SAW Keychain Touchpad	5
60-712 9 VAC Line Carrier Transformer	4
60-713 9 VDC Lithium Battery	4
60-720 Simon Table Mounting Base	3
60-736-95 Supervised Wireless Interior Siren (SWIS)	6
60-741-11-95 Micro Recessed Brown D/W Sensor	9
60-741-95 Micro Recessed Belgian Gray Door/Window Sensor	9
60-742-95R Freeze Sensor	13
60-744-95R Water Sensor	13
60-766 CS-5000 Central Station Receiver	16
60-776-01-95R Simon Control Panel with Integrated 2-Way Voice	3
60-776-01-95R Simon Control Panel with Integrated Two-Way Voice	3
60-776-95R Simon Control Panel	3
60-785 7.2, 24 hr VDC Battery	4
60-788-95R TouchTalk 2-Way RF TouchTalk Touchpad	5
60-795 7.2, 18 hr VDC Battery	4
60-807-95R Indoor PIR Pet Immune Motion Sensor	8
60-834 FlexGuard® Dual Disturbance Sound Sensor	11
80-213-2 Simon Demonstration Kit	17

Security
Automation
Fire Protection
Access Control



INTERACTIVE TECHNOLOGIES, INC.
2266 SECOND STREET NORTH
NORTH SAINT PAUL, MN 55109-2900
T: 800-777-1415
F: 651-779-4890
WEB SITE: WWW.ITII.COM

©Interlogix, Inc. August 2000
Specifications subject to change.
Some features are optional.
Document Number: 466-1242-SM